

Finding Your User/Customer ID

Before you can use my software (Indicators and Strategies, PaintBars and ShowMes) I have to put your UserID into my code. These numbers are easily found within your program (TradeStation or MultiCharts).

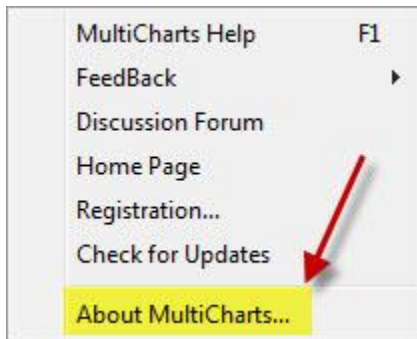
For MultiCharts:

Follow this menu sequence: Help → About MultiCharts → read off the UserID

It looks like this:



Help



About MultiCharts

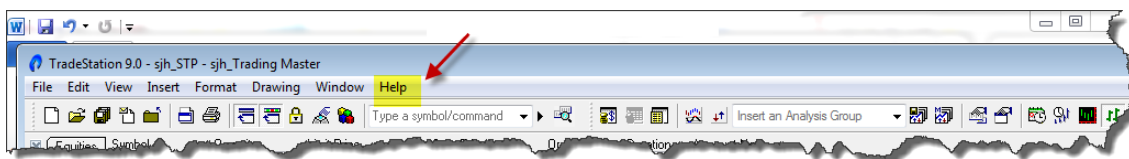


User ID

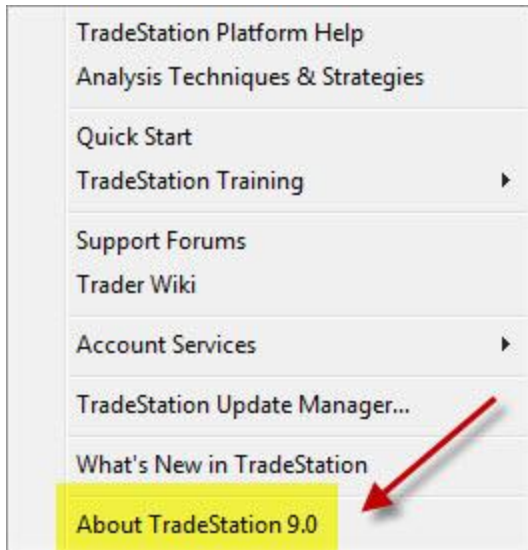
For TradeStation:

Help → About TradeStation → read off the Customer ID

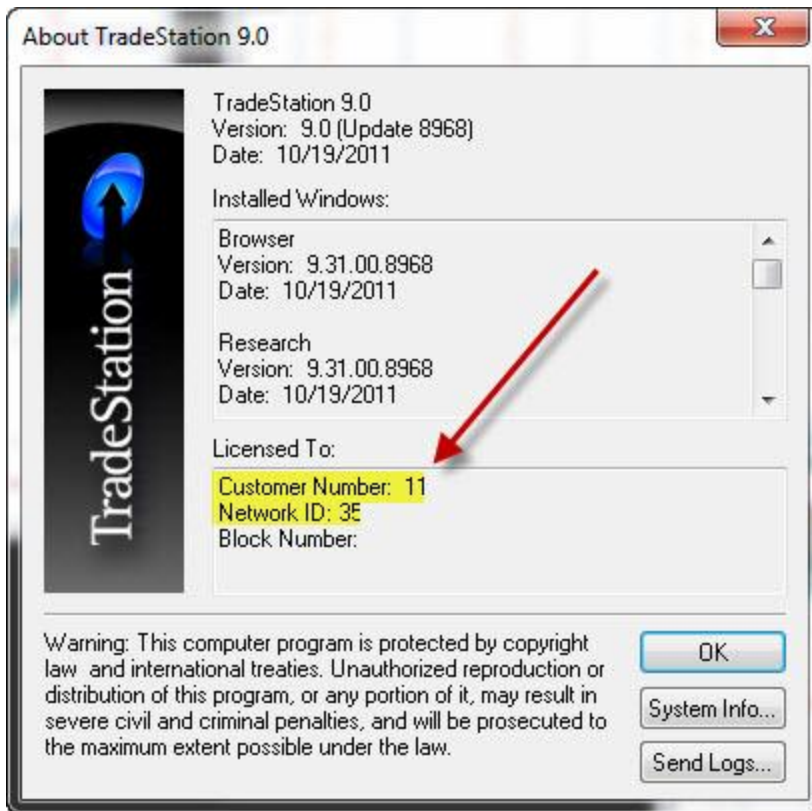
It looks like this:



Help



About



Customer Number and Network ID